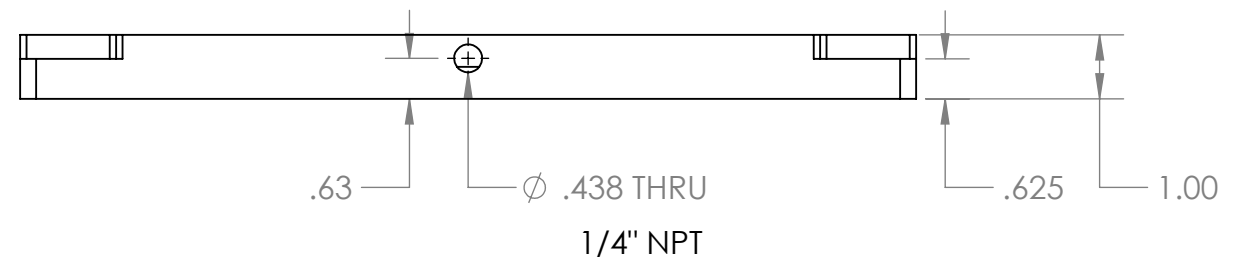
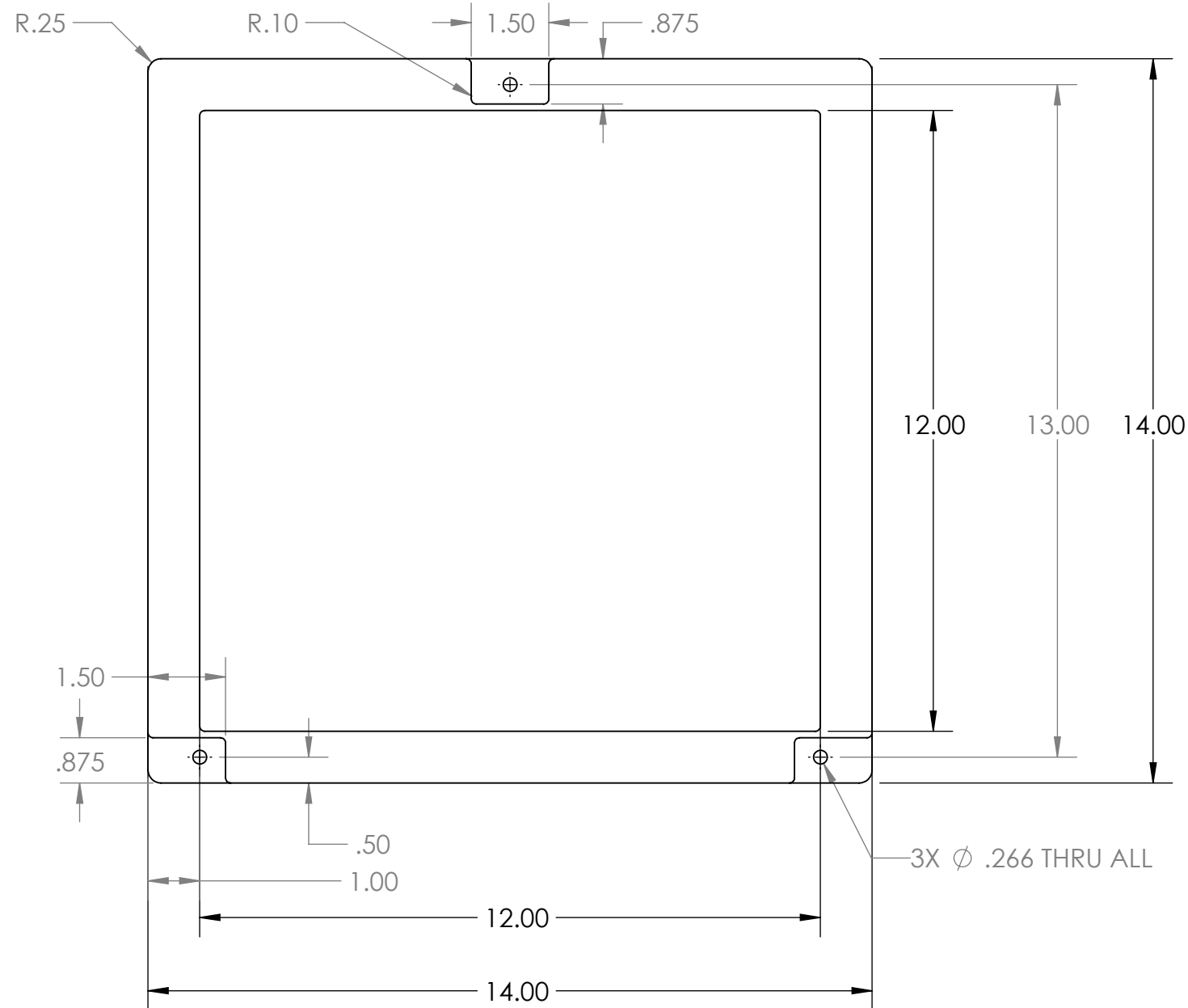




Photomachining, Inc.
 4 Industrial Dr # 40, Pelham, NH 03076
 (603) 882-9944
 www.photomachining.com



Note:
 Ceramic stands up typically 0.125"
 above the surface of the frame,
 but this varies based upon the
 finishing process

PROPRIETARY AND CONFIDENTIAL
 THE INFORMATION CONTAINED IN THIS
 DRAWING IS THE SOLE PROPERTY OF
 <INSERT COMPANY NAME HERE>. ANY
 REPRODUCTION IN PART OR AS A WHOLE
 WITHOUT THE WRITTEN PERMISSION OF
 <INSERT COMPANY NAME HERE> IS
 PROHIBITED.

| | | | | | | |
|-------------|------------------|--------------------------------------|-----------|------|--------|--|
| | | UNLESS OTHERWISE SPECIFIED: | NAME | DATE | | |
| | | DIMENSIONS ARE IN INCHES | DRAWN | | | |
| | | TOLERANCES: | CHECKED | | TITLE: | |
| | | FRACTIONAL \pm | ENG APPR. | | | |
| | | ANGULAR: MACH \pm BEND \pm | MFG APPR. | | | |
| | | TWO PLACE DECIMAL \pm | Q.A. | | | |
| | | THREE PLACE DECIMAL \pm | COMMENTS: | | | |
| | | INTERPRET GEOMETRIC TOLERANCING PER: | | | | |
| | | MATERIAL | | | | |
| NEXT ASSY | USED ON | FINISH | | | | |
| APPLICATION | | DO NOT SCALE DRAWING | | | | |
| SIZE | DWG. NO. | REV | | | | |
| B | CVC-12-20 | | | | | |
| SCALE: 1:3 | WEIGHT: | SHEET 1 OF 1 | | | | |